



Aldbourne Road, London, W12

BUTLER  STAG





# Immediately available brand new luxury two bedroom apartment within a prime West London location.



- Luxury Two Bedroom Apartment
- Open-Plan Kitchen / Living
- Shepherd's Bush Location
- Available Now !
- Brand New
- Private Balcony
- Furnished

Situated just moments from a vibrant mix of bars, acclaimed restaurants, independent cafés and premium retail stores, this must-see property places everything you need right on your doorstep.

The apartment itself features a well-proportioned open-plan layout designed for both comfort and style. The sleek fitted kitchen comprises elegant stone worktops and top-of-the-range Bosch appliances and the adjoining reception offers plenty of space for living and dining, as well as direct access to the private balcony.

Both bedrooms are doubles, offering a calm and cosy atmosphere, complete with plush carpeting for added comfort. The apartment is completed by a gorgeous contemporary bathroom and hallway storage.

The location benefits from excellent transport links, with the nearby A4 and A40 providing quick and convenient access to West and North West London, while Uxbridge Road offers a direct route into the West End. Askew Road connects easily to Hammersmith and Chiswick, making commuting and weekend outings stress-free.

Offered furnished and available now!

EPC Rating C  
Council Tax Band - New Build TBC

\*This property has been virtually staged for illustration purposes



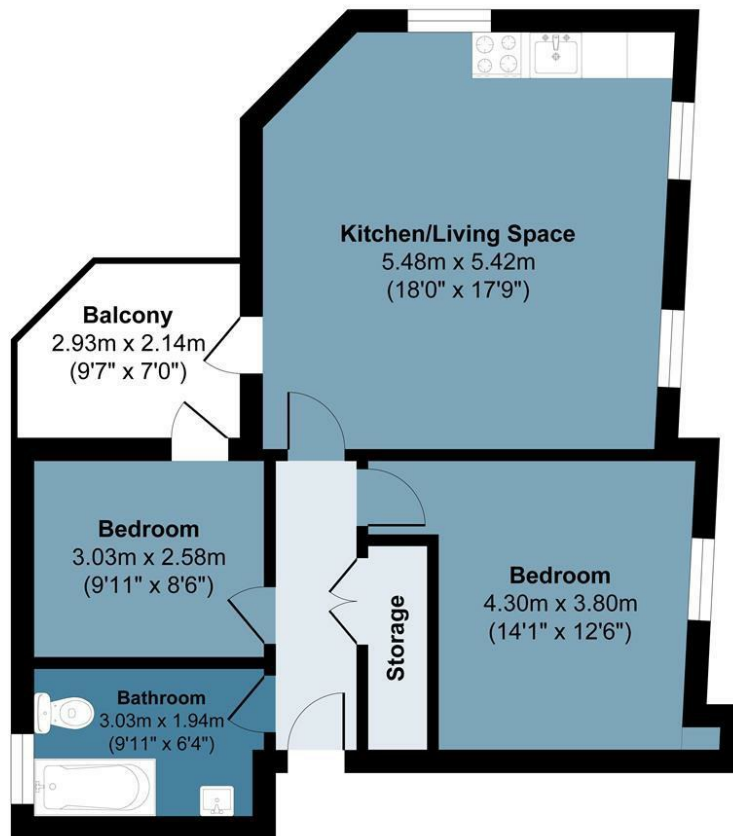




## Old Oak House

Approx. Gross Internal Area 63.6 sq M (685 sq Ft)

**BUTLER & STAG**



Measurements are approximate and for illustration purposes only, while we do not doubt the accuracy and completeness, we advise you conduct independent assessment of the property to determine monetary value.  
© @ modephotouk www.modephoto.co.uk

IMPORTANT NOTICE - These particulars have been prepared in good faith and they are not intended to constitute part of an offer or contract. We have not performed a structural survey on this property and the services, appliances and specific fittings have not been tested. All photographs, measurements, floor plans and distances referred to are given as a guide and should not be relied upon.

**BUTLER & STAG**

☎ 020 8102 1236

🏠 508 Roman Road, Bow, London, E3 5LU

✉ bow@butlerandstag.com

[www.butlerandstag.uk](http://www.butlerandstag.uk)